

EXPLOSIVE SAFETY TESTING

Supplementing the Existing Knowledge Database and Providing Empirical Anchor Points for Modeling

Test Recommendation

APT is integrally involved in the international explosives safety testing community and is aware of the testing that has been conducted and those tests currently in the planning stages. If the data are lacking, APT knows what to test or propose to resolve the problem.

Test Planning

If a test is to be conducted, APT can (and does) plan testing at various test sites around the world. APT can work with numerous communities to help share the test costs, if desired.

APT is integrally involved in the international explosives safety testing community.

Site Investigation

APT can determine the best available, capable, experienced, and cost effective site for the customer's needs and "marry" the range to the test.

Test Plan Development

APT writes complete test plans for the required testing. Such test plans can be as formal as desired by the test site or by the customer.

Test Execution and Support

APT can be on hand to help conduct the test and can provide the appropriate personnel to ensure the test is executed in accordance with the test plan and the customer's needs.

Debris Recovery

APT can provide the manpower, from a single subject matter expert to a full data recovery crew, to ensure that the test results are not left at the test site.

Data Cataloging

From a detailed piece-by-piece analysis of debris to a simple summary description, APT is experienced at cataloging the test results. Importantly, these results are cataloged in a format that is suitable for introduction into a software model.

Data Analysis

Turning the raw data into state-of-the-art algorithms is not a simple task, but it is one for which APT is renowned in the international community.

Test Report

APT can completely write or merely assist in the development of a comprehensive test report that includes all relevant data.

Test Coordination & Consensus Building

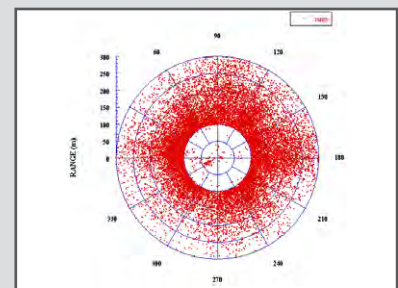
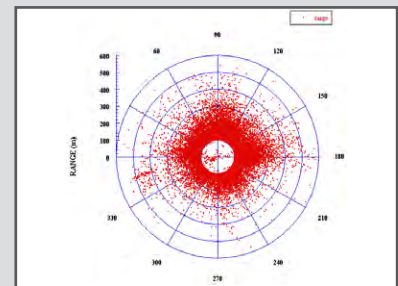
This is APT's strong suit and an area where customer satisfaction is at its highest.

Capabilities

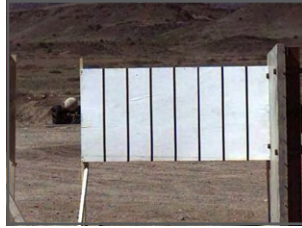
- Test Recommendation
- Test Planning
- Site Investigation
- Test Plan Development
- Test Execution and Support
- Data Recovery
- Data Cataloging
- Data Analysis
- Test Report
- Test Coordination & Consensus Building

Explosive Testing Sites

- Woomera Prohibited Area, South Australia
- Naval Air Weapons Station China Lake
- Redstone Test Center
- Dugway Proving Ground
- Energetic Materials Research and Testing Center (EMRTC)
- Utah Test and Training Range

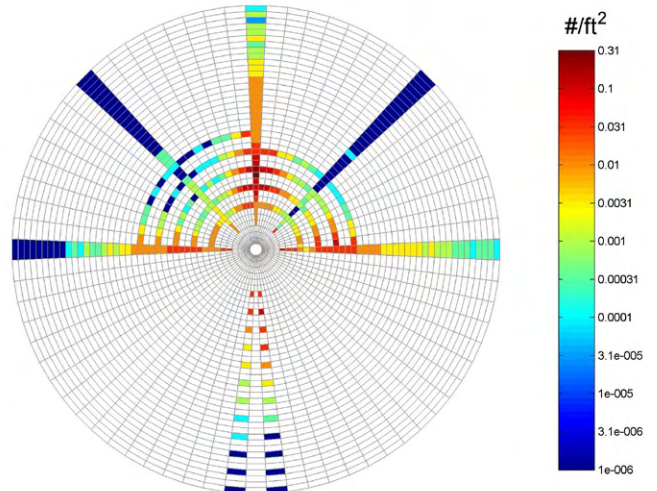


SPIDER Program

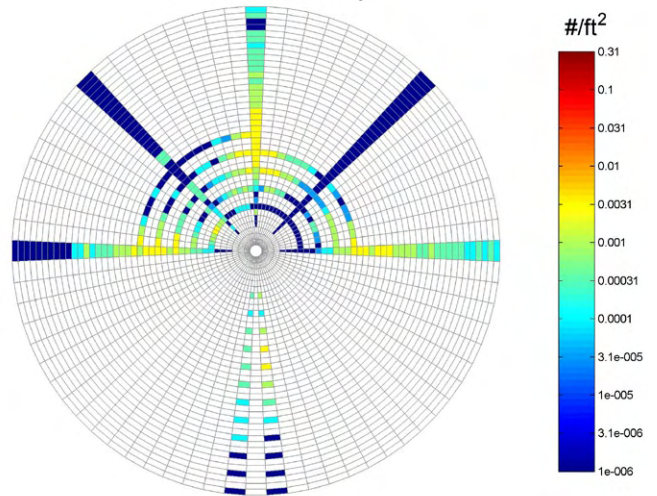


SciPan Program

Debris Density



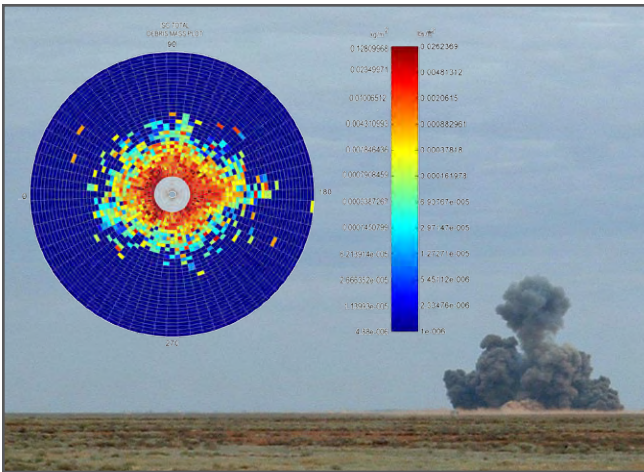
Lethal Density



International Collaboration



ISO Program



New Initiatives



APT Point of Contact

John Tatom
256.327.3373
aptinfo@apt-research.com



A-P-T RESEARCH, INC.

4950 Research Drive
Huntsville, AL 35805
www.apt-research.com